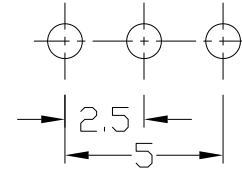
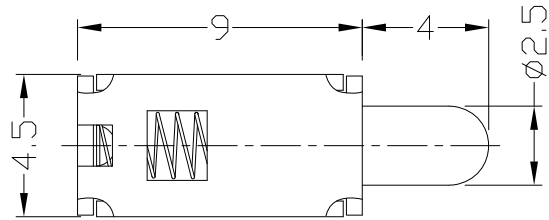




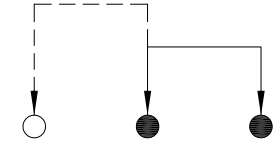
RoHS
Compliant
2002/95/EC

REV.	ECN.	NO.	APPD.

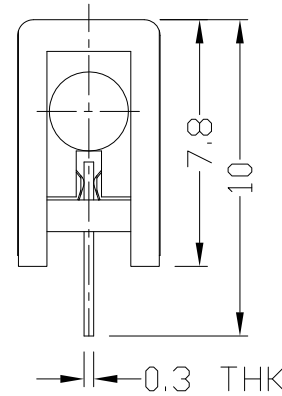
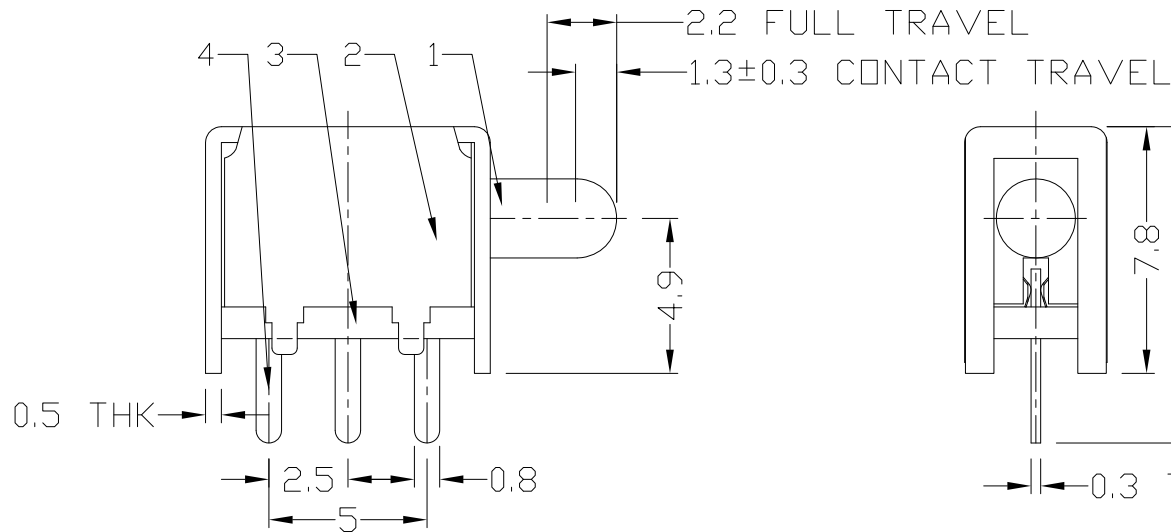
DIMENSIONS



P.C.B LAYOUT
BOTTOM VIEW



CIRCUIT DIAGRAM



ELECTRO-MECHANICAL CHARACTERISTICS
Refer to additional specifications

RATING	DC50V 0.3A
CIRCUIT	1P2T
CONTACT RESISTANCE	100mΩ MAX.
TIMING	NON-SHORTING
OPERATING MODE	NON-LOCK
STROKE	FULL 2.2mm CONTACT 1.3±0.3
OPERATING FORCE	70±20gf
OPERATING LIFE(cycles)	10,000

8					WITHIN 1.5mm±0.1mm	UNITS mm
7					OVER 1.5mm±0.2mm	MAT'L
6	SPRING	STEEL WIRE	1	NATURAL		SEE NOTE
5	CONTACT CLIP	PBS STRIP	1	Ag PLATED		
4	TERMINAL	BRASS STRIP	3	Ag PLATED		
3	BASE	PHENOLIC RESIN	1	NATURAL		FINISH
2	FRAME	STEEL STRIP	1	Ni PLATED		SEE NOTE
1	KNOB	POM	1	BLACK		Q'TY
NO.	PARTS	MATERIAL	Q'TY	FINISHING		

THESE DRAWINGS AND SPECIFICATIONS ARE THE PROPERTY OF ACCURATE INNOTECH INC AND SHALL NOT BE REPRODUCED, COPIED OR USED IN ANY MANNER WITHOUT THE PRIOR WRITTEN CONSENT OF ACCURATE INNOTECH INC.

雅安科技有限公司 ACCURATE INNOTECH INC.			
TITLE: PUSH SWITCH / HORIZONTAL	PART NO.: AP-12D33N		
DR: <i>Ricky</i> 2015/03/30	DWG NO.: ADL-12D33		
CHKD: <i>Ricky</i> 2015/03/30	SCALE 4:1	SHEET 1/1	REV. A
APPD:	CUSTOMER DRAWING		