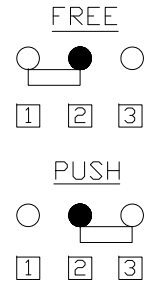
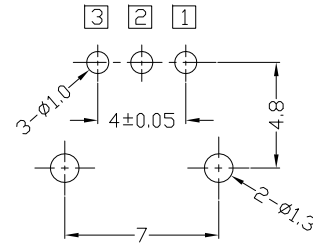
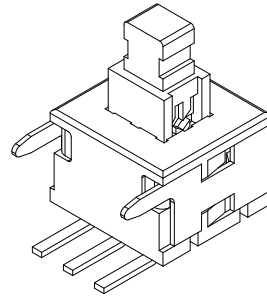
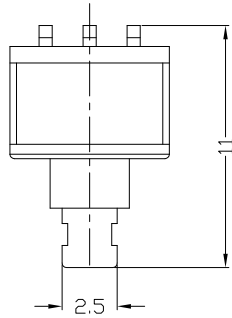




RoHS
Compliant
2002/95/EC

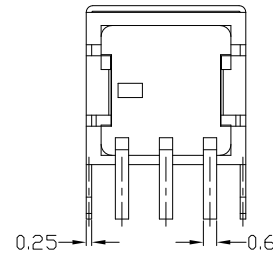
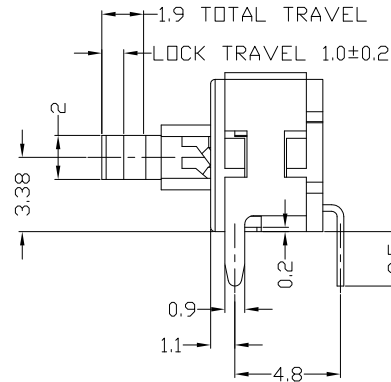
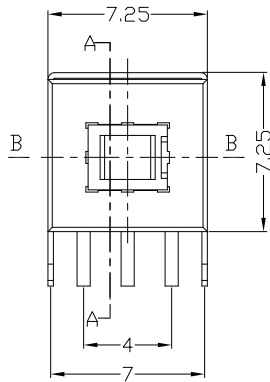
| REV. | ECN. NO. | APPD. |
|------|----------|-------|
| | | |
| | | |

DIMENSIONS



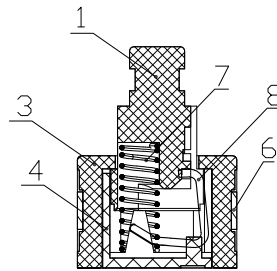
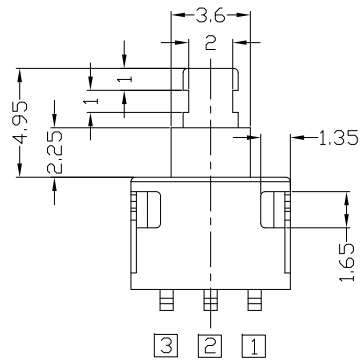
P.C.B. LAYOUT
TOP VIEW

CIRCUIT DIAGRAM

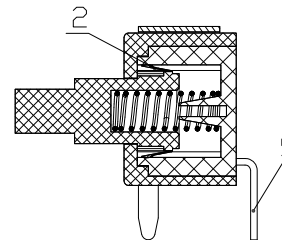


ELECTRO-MECHANICAL CHARACTERISTICS
Refer to additional specifications

| | | |
|------------------------|-------------|------------|
| RATING | 50mA 12V DC | |
| CIRCUIT | 1P2T | |
| CONTACT RESISTANCE | 100mΩ MAX. | |
| TIMING | SHORTING | |
| OPERATING MODE | SELF-LOCK | AP-2212VL |
| | NON-LOCK | AP-2212VN |
| STROKE | FULL 1.9mm | LOCK 1.0mm |
| OPERATING FORCE | 200±50gf | |
| OPERATING LIFE(cycles) | 10,000 | |



截面 B-B



截面 A-A

| NO. | PARTS | MATERIAL | Q'TY | FINISHING | |
|-----|----------------|---------------|------|-----------|----------------------|
| 9 | | | | | WITHIN 1.5mm: ±0.1mm |
| 8 | CAM STICK | SUS304 | 1 | NATURAL | OVER 1.5mm: ±0.2mm |
| 7 | SPRING | SUS304 | 1 | NATURAL | |
| 6 | FRAME | SUS304 | 1 | Sn PLATED | |
| 5 | METAL TERMINAL | BRASS STRIP | 3 | Ag PLATED | |
| 4 | CASE | PPA | 1 | BLACK | |
| 3 | COVER | PPA | 1 | GRAY | |
| 2 | CONTACT PIECE | PBS C5210R-EH | 6 | Ag CLAD | |
| 1 | KNDB | PPA | 1 | WHITE | |
| | | | | | |

THESE DRAWINGS AND SPECIFICATIONS ARE THE PROPERTY OF ACCURATE INNOTECH INC AND SHALL NOT BE REPRODUCED, COPIED OR USED IN ANY MANNER WITHOUT THE PRIOR WRITTEN CONSENT OF ACCURATE INNOTECH INC.

| | |
|--------|----------|
| UNITS | mm |
| MAT'L | SEE NOTE |
| FINISH | SEE NOTE |
| Q'TY | |

| | | | |
|------------------------------------|--|-----------------------|------------------|
| 雅安科技有限公司 ACCURATE INNOTECH INC. | | | |
| TITLE: PUSH SWITCH / HORIZONTAL | | PART NO.: AP-2212V | |
| DR: <i>Ricky</i> 2020/05/13 | | DWG NO.: ADL-2212V | |
| CHKD: <i>Ricky</i> 2020/05/13 | | SCALE | SHEET |
| APPD: | | 2:1 | 1/1 |
| | | REV. | CUSTOMER DRAWING |
| | | A | |