

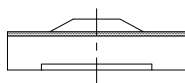
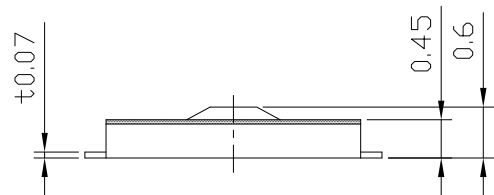
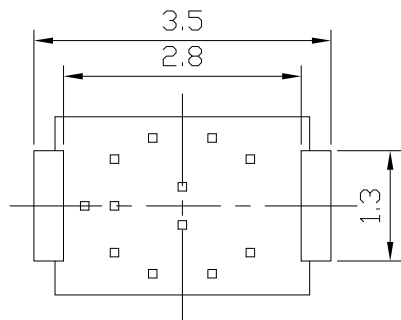


RoHS
Compliant
2002/95/EC

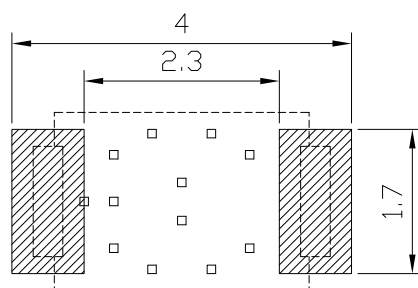
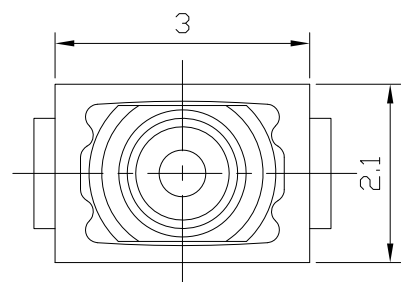


REV.	ECN.	NO.	APPD.

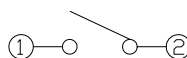
DIMENSIONS



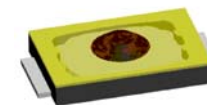
P.C.B MOUNTING PATTERN DIMENSION
The following soldering patterns are recommended for reflow soldering



CIRCUIT DIAGRAM



PRODUCT IMAGE



ELECTRO-MECHANICAL CHARACTERISTICS

Refer to additional specifications

Rating	DC 12V 50mA
Contact Resistance	500mΩ Max.
Travel	0.15 ± 0.1mm
Operating Force	200±50gf
Operating Life(cycles)	100,000

.X ±0.3

X. ±2*

UNITS mm

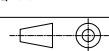
MAT'L

SEE NOTE

FINISH

SEE NOTE

Q'TY



雅安科技有限公司
ACCURATE INNOTECH INC.

TITLE:
TACT SWITCH

PART NO.:
AT-1123 SERIES

DR: *Ricky* 2017/04/06

DWG NO.:
ASI-1123

CHKD: *Ricky* 2017/04/06

APPD:

SCALE	SHEET	REV.	CUSTOMER DRAWING
1:1	1/1	A	

THESE DRAWINGS AND SPECIFICATIONS ARE THE PROPERTY OF ACCURATE INNOTECH INC AND SHALL NOT BE REPRODUCED, COPIED OR USED IN ANY MANNER WITHOUT THE PRIOR WRITTEN CONSENT OF ACCURATE INNOTECH INC.