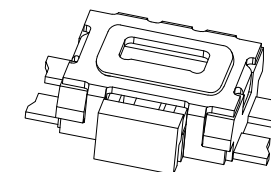
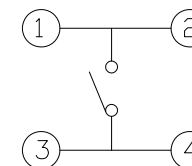
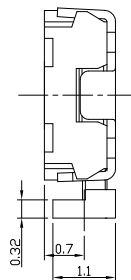
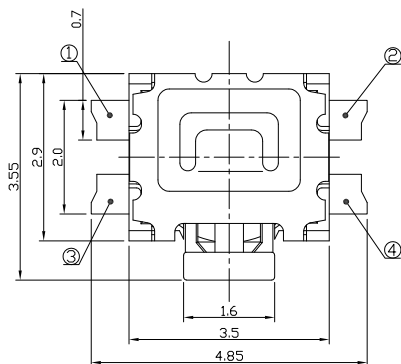




REV.	ECN.	NO.	APPD.

CIRCUIT DIAGRAM

PRODUCT IMAGE

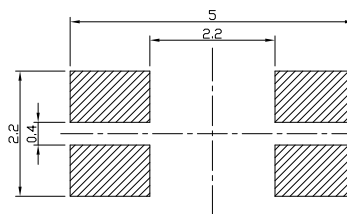
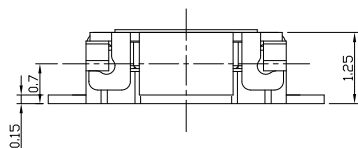


P.C.B MOUNTING PATTERN DIMENSION

The following soldering patterns are recommended for reflow soldering

ELECTRO-MECHANICAL CHARACTERISTICS

Refer to additional specifications



Rating	DC 12V 50mA
Contact Resistance	100mΩ Max.
Travel	0.2 ± 0.1mm
Operating Force	220±50gf
Operating Life(cycles)	100,000

6	Dust Cover	PI Film	2		.X ±0.3	X. ±2*	UNITS mm	雅安科技有限公司 ACCURATE INNOTECH INC.					
5	Knob	LCP	1				MAT'L	TITLE: TACT SWITCH			PART NO.: AT-1135BP1 SERIES		
4	Cover	Stainless Steel	1				SEE NOTE						
3	Contact	Stainless Steel	1	Ag Clad			FINISH	DR: Ricky 2024/03/22			DWG NO.: ASI-1135BP1		
2	Case	LCP	1				SEE NOTE						
1	Terminal	Phosphor Bronze	1	Ag Plating	THESE DRAWINGS AND SPECIFICATIONS ARE THE PROPERTY OF ACCURATE INNOTECH INC AND SHALL NOT BE REPRODUCED, COPIED OR USED IN ANY MANNER WITHOUT THE PRIOR WRITTEN CONSENT OF ACCURATE INNOTECH INC.		Q'TY	CHKD: Ricky 2024/03/22			SCALE SHEET REV. CUSTOMER DRAWING		
NO	PARTS	MATERIAL	QTY	FINISHING			