

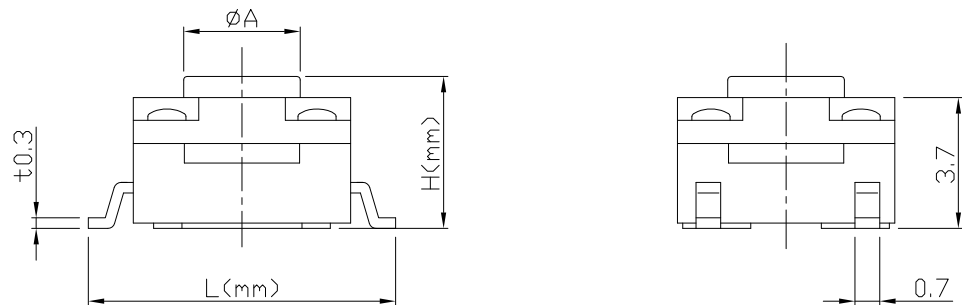


RoHS  
Compliant  
2002/95/EC

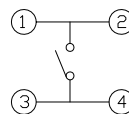


REV.	ECN.	NO.	APPD.

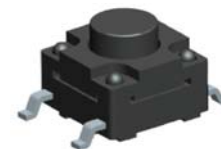
### DIMENSIONS



### CIRCUIT DIAGRAM



### PRODUCT IMAGE

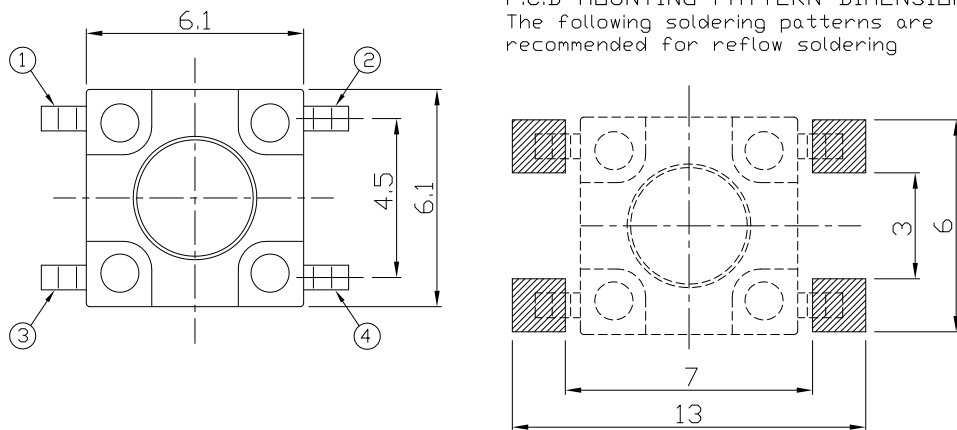


### MODEL CODE

AT-1141S-		H	$\phi A$	L
-	4.3	3.5	9	
A	4.5	3.5		
C	5.0	3.5		
D	5.5	3.4		
E	6.0	3.4		
F	6.5	3.3		
G	7.0	3.4		
H	7.5	3.3		
I	8.0	3.3		
J	8.5	3.3		
K	9.0	3.0		

### P.C.B MOUNTING PATTERN DIMENSION

The following soldering patterns are recommended for reflow soldering



### ELECTRO-MECHANICAL CHARACTERISTICS

Refer to additional specifications

Rating	DC 12V 50mA	
Contact Resistance	100m $\Omega$ Max.	
Insulation Resistance	100M $\Omega$ (DC 500V / 1 min) Min.	
Withstanding Voltage	250 VAC / min.	
Travel	0.25 $\pm$ 0.1mm	
Operating Force	160 $\pm$ 50gf	250 $\pm$ 50gf
Operating Life(cycles)	100,000	

.X  $\pm 0.3$

X.  $\pm 2^*$

UNITS mm

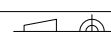
MAT'L

SEE NOTE

FINISH

SEE NOTE

Q'TY



THESE DRAWINGS AND SPECIFICATIONS ARE THE PROPERTY OF ACCURATE INNOTECH INC AND SHALL NOT BE REPRODUCED, COPIED OR USED IN ANY MANNER WITHOUT THE PRIOR WRITTEN CONSENT OF ACCURATE INNOTECH INC.

雅安科技有限公司  
ACCURATE INNOTECH INC.

TITLE: TACT SWITCH/  
waterproof

DR: Ricky 2020/03/16

CHKD: Ricky 2020/03/16

APPD:

PART NO.:

AT-1141S SERIES

DWG NO.:

ASI-1141S

SCALE

1:1

SHEET

1/1

REV.

A

CUSTOMER

DRAWING