

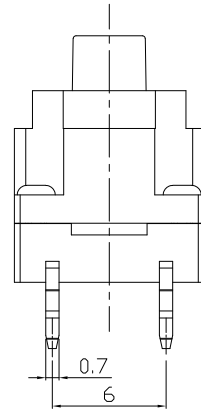
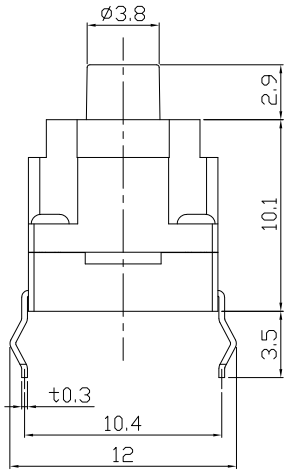


RoHS
Compliant
2002/95/EC

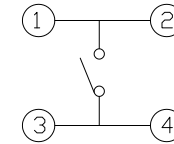


REV.	ECN.	NO.	APPD.

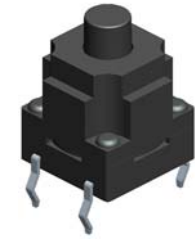
DIMENSIONS



CIRCUIT DIAGRAM



PRODUCT IMAGE

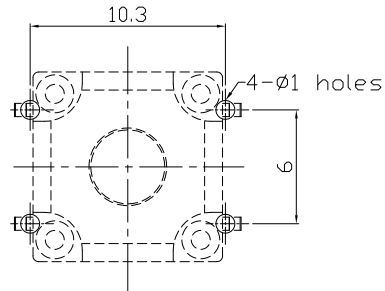
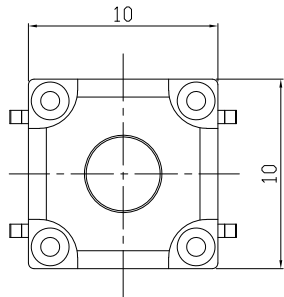


P.C.B MOUNTING PATTERN DIMENSION

The following soldering patterns are recommended for reflow soldering

ELECTRO-MECHANICAL CHARACTERISTICS

Refer to additional specifications



Rating	DC 12V 50mA
Contact Resistance	100mΩ Max.
Insulation Resistance	100MΩ (DC 500V / 1 min) Min.
Withstanding Voltage	250 VAC / min.
Travel	0.5 ± 0.2mm
Operating Force	250±50gf
Operating Life(cycles)	100,000

.X ±0.3 X. ±2'

UNITS mm

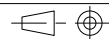
MAT'L

SEE NOTE

FINISH

SEE NOTE

Q'TY



雅安科技有限公司
ACCURATE INNOTECH INC.

TITLE:
TACT SWITCH / waterproof

DR: *Ricky* 2024/03/22

CHKD: *Ricky* 2024/03/22

APPD:

PART NO.:
AT-1143 SERIES

DWG NO.:
ASI-1143

SCALE	SHEET	REV.	CUSTOMER
1:1	1/1	A	DRAWING

THESE DRAWINGS AND SPECIFICATIONS ARE THE PROPERTY OF ACCURATE INNOTECH INC AND SHALL NOT BE REPRODUCED, COPIED OR USED IN ANY MANNER WITHOUT THE PRIOR WRITTEN CONSENT OF ACCURATE INNOTECH INC.