



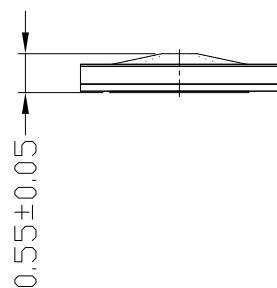
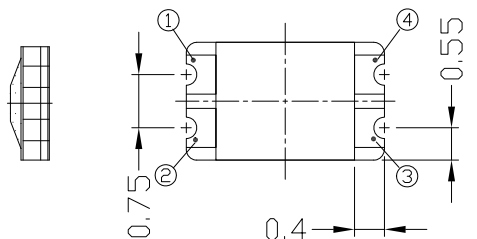
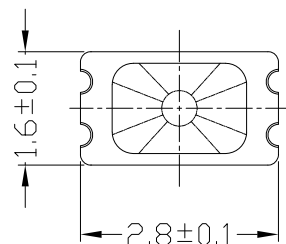
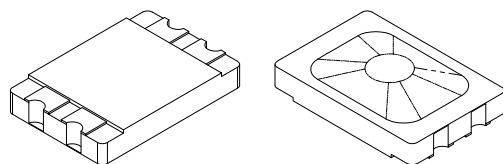
RoHS Compliant
2002/95/EC



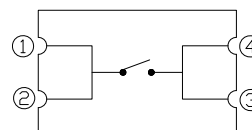
Halogen Free

REV.	ECN.	NO.	APPD.

DIMENSIONS



CIRCUIT DIAGRAM

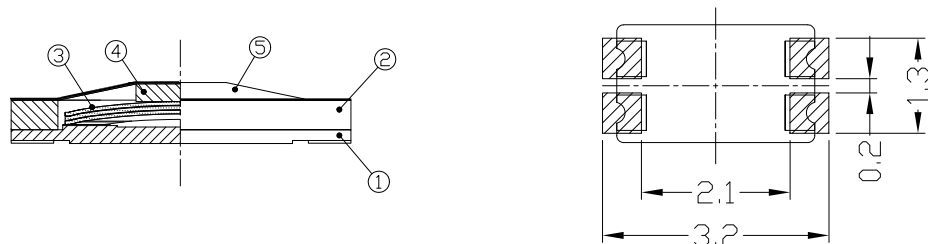


MODEL CODE

AT-2816-1-240G-Y

(A)	Height	Operating Force	Cover film Color
1	0.55±0.05	70±30gf	Y=Yellow
		100±30gf	
		160±30gf	
		240±30gf	

RECOMMEND LAND PATTERN



ELECTRO-MECHANICAL CHARACTERISTICS

Refer to additional specifications

Rating	DC 12V 50mA
Contact Resistance	100mΩ Max.
Travel	0.11±0.05mm
Operating Force	See chart
Operating Life(cycles)	500,000

NO.	PARTS	METERIAL	Q'TY	FINISHING
5	Cover film	Polyimide & Epoxy	1	
4	Actuator	Polyimide & Epoxy	1	
3	Metal dome	SUS301	1~4	Ag plating or No plating
2	Guide film	Polyimide & Epoxy	1	
1	PCB	Glass epoxy,Cu,PSR	1	Au+Ni plating

General Tolerance	
Dimension	mm (°)
X	±0.2
X.X	±0.1
X.XX	±0.05
X.XXX	±0.01
ANGLE	±1°

THESE DRAWINGS AND SPECIFICATIONS ARE THE PROPERTY OF ACCURATE INNOTECH INC AND SHALL NOT BE REPRODUCED, COPIED OR USED IN ANY MANNER WITHOUT THE PRIOR WRITTEN CONSENT OF ACCURATE INNOTECH INC.

UNITS	mm	雅安科技有限公司 ACCURATE INNOTECH INC.				
MAT'L	SEE NOTE					
FINISH	SEE NOTE	TITLE:	PART NO.:			
Q'TY	SEE NOTE	SMD DOME SWITCH	AT-2816 SERIES			
		DR: Ricky 2022/06/30	DWG NO.:			
		CHKD: Ricky 2022/06/30	AKS-2816			
		APPD:	SCALE	SHEET	REV.	CUSTOMER DRAWING
			1:1	1/1	A	