



RoHS Compliant  
2002/95/EC



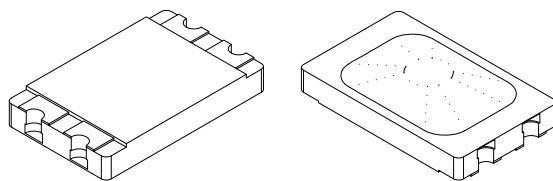
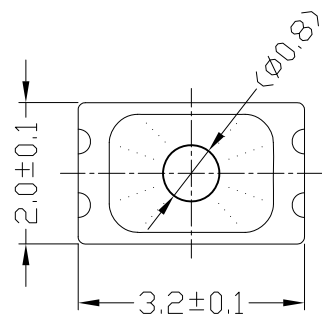
Halogen Free

REV.	ECN. NO.	APPD.

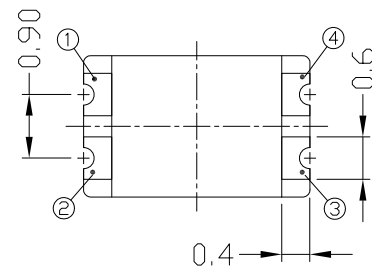
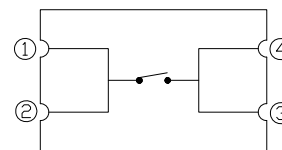
MODEL CODE

AT-3220-2-240G-Y

DIMENSIONS

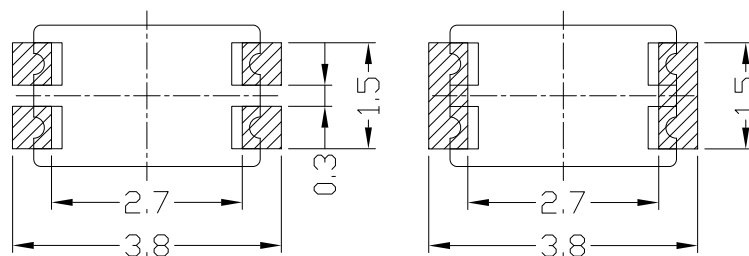
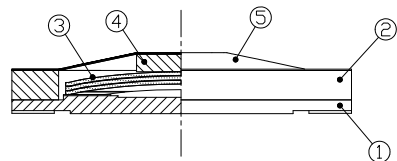
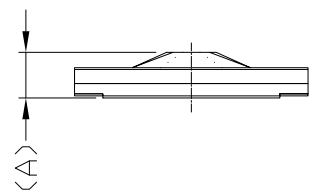


CIRCUIT DIAGRAM



(A)	Height	Operating Force	Cover film Color
2	0.60±0.05	160±30gf	Y=Yellow
		180±30gf	
		220±30gf	
		240±30gf	
		300±30gf	
3	0.65±0.05	160±30gf	
		180±30gf	
		200±30gf	
		240±30gf	
		300±30gf	

RECOMMEND LAND PATTERN



ELECTRO-MECHANICAL CHARACTERISTICS

Refer to additional specifications

Rating	DC 12V 50mA
Contact Resistance	100mΩ Max.
Travel	0.13±0.05mm
Operating Force	See chart
Operating Life(cycles)	500,000

5	Cover film	Polyimide & Epoxy	1	
4	Actuator	Polyimide & Epoxy	1	
3	Metal dome	SUS301	1~3	Ag plating or No plating
2	Guide film	Polyimide & Epoxy	1	
1	PCB	Cu,PSR	1	Au+Ni plating
NO.	PARTS	METERIAL	Q'TY	FINISHING

General Tolerance	
Dimension	mm (°)
X	±0.2
X.X	±0.1
X.XX	±0.05
X.XXX	±0.01
ANGLE	±1°

THESE DRAWINGS AND SPECIFICATIONS ARE THE PROPERTY OF ACCURATE INNOTECH INC AND SHALL NOT BE REPRODUCED, COPIED OR USED IN ANY MANNER WITHOUT THE PRIOR WRITTEN CONSENT OF ACCURATE INNOTECH INC.

UNITS	mm
MAT'L	SEE NOTE
FINISH	SEE NOTE
Q'TY	
雅安科技有限公司 ACCURATE INNOTECH INC.	
TITLE:	SMD DOME SWITCH
PART NO.:	AT-3220 SERIES
DR:	Ricky 2022/06/30
DWG NO.:	AKS-3220
CHKD:	Ricky 2022/06/30
APPD:	
SCALE	1:1
SHEET	1/1
REV.	A
CUSTOMER DRAWING	