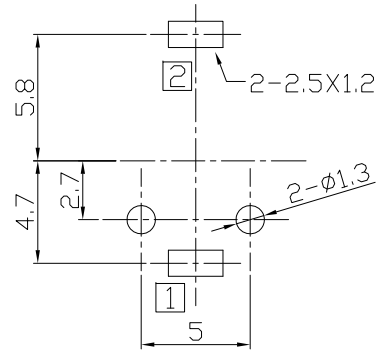
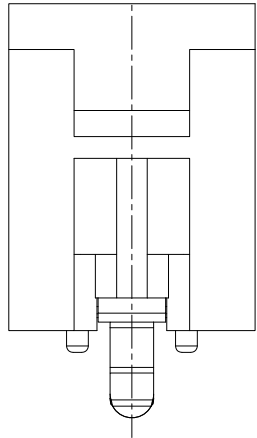
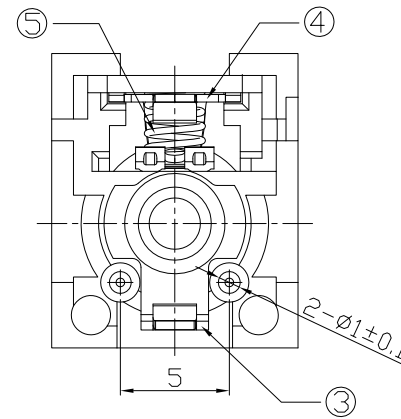
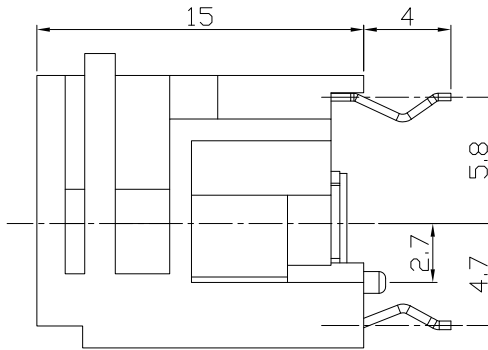
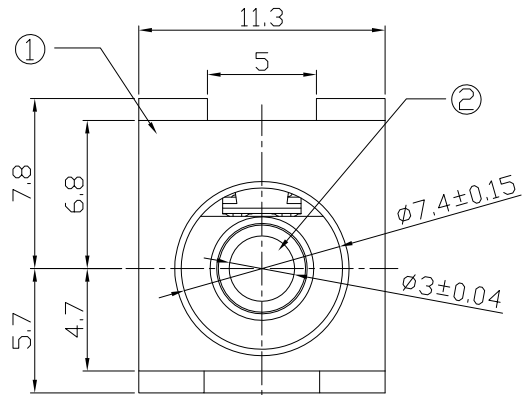




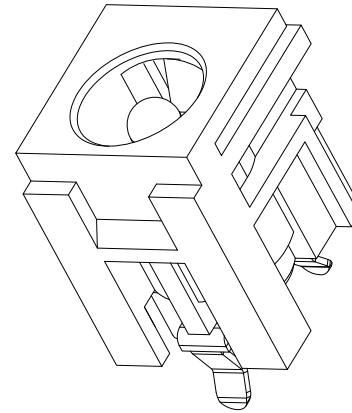
RoHS  
Compliant  
2002/95/EC

REV.	ECN.	NO.	APPD.

## DIMENSIONS



P.C.B Layout  
(Copper-sided view)



## MODEL CODE:

DCB0-00240- B K PB BK C 0 4  
(1) (2) (3)(4) (5) (6) (7)(8) (9)

(1):Series type:DIP DC POWER JACK.

(2):Series No.

(3):Schematic option: B

(4):Center pin diameter:  
K=φ3.0

(5):Material of housing:  
PB=PBT (Standard)

(6):Housing color:  
BK=Black (Standard)

(7):Terminal plating  
C=Copper&tin(Standard)  
S=Silver(Ag)  
T=Tin(Sn)

(8):Special option:  
0=No special option

(9):Packing mode:

4=Bag packing

## SPECIFICATION:

1.Rating : DC 20V 4A;

2.Contact resistance: ≤30mΩ;

3.Insulation resistance: ≥100MΩ (DC250V);

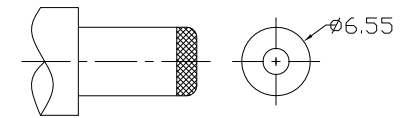
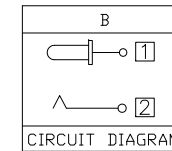
4.Withstand voltage: 500VAC ;

5.Insertion and extraction force: 3-30N;

6.life test: 5,000 cycles;


7.Operation temperature range:-20°C~70°C;

8.Preservative temperature range:-40°C~85°C;



DC MATE PLUG

○: ITEM NO. □: TERMINAL NO.

					TOLERANCE	ANGLES	UNITS mm	雅安科技有限公司 ACCURATE INNOTECH INC.						
④	Spring	Spring steel	1	Nickel-Plating	±0.3	±2°	MAT'L	TITLE: DIP DC POWER JACK	PART NO.: DCB0-00240					
④	Tip spring	Phosphor bronze	1	CuSn-Plating			SEE NOTE							
③	Center pin contact	Brass	1	CuSn-Plating			FINISH		DR: Ricky 2019/04/10					
②	Center pin	Copper alloy	1	Nickel-Plating	THESE DRAWINGS AND SPECIFICATIONS ARE THE PROPERTY OF ACCURATE INNOTECH INC. AND SHALL NOT BE REPRODUCED, COPIED OR USED IN ANY MANNER WITHOUT THE PRIOR WRITTEN CONSENT OF ACCURATE INNOTECH INC.		SEE NOTE	CHKD: Ricky 2019/04/10	DWG NO.: AB0-00240					
①	Housing	PBT	1			Q'TY	SCALE					SHEET	REV.	CUSTOMER
NO.	PARTS	MATERIAL	Q'TY	FINISHING			APPD:					1:1	1/1	A