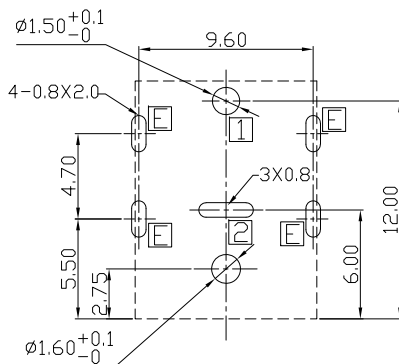
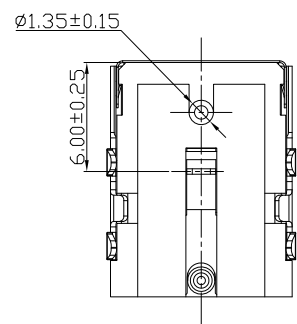
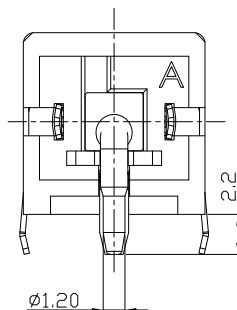
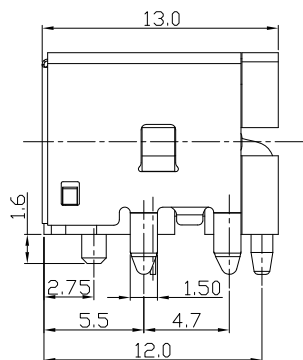
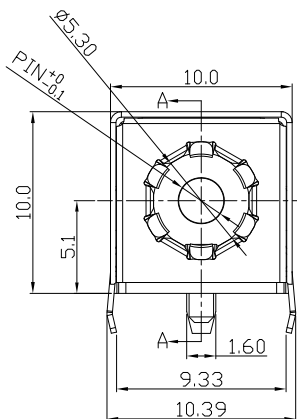
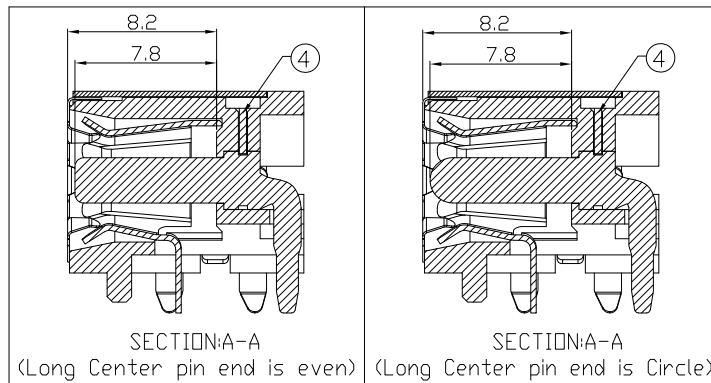




RoHS Compliant  
2002/95/EC

**Halogen Free**

**DIMENSIONS**



RECOMMENDED P.C.B. LAYOUT  
UNSPECIFIED TOLERANCE:±0.05  
(TOP VIEW)

**MODEL CODE:**

DCB0-01460- B □ 10 BK S 0 1

(1) (2) (3)(4) (5) (6) (7)(8) (9)

(1):Series type:DIP DC POWER JACK.

(2):Series No.

(3):Schematic option: B

(4):Center pin diameter:

G=φ1.65 , H=φ2.0 , J=φ2.5

(5):Material of housing:

10=PA10T(Standard)

(6):Housing color:

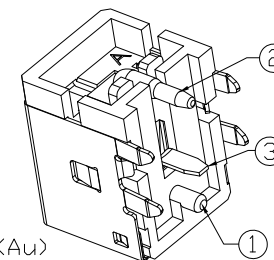
BK=Black , 3C=Orange(157C)

(7):Terminal plating

T=Tin(Sn) , S=Silver(Ag) , G=Gold(Au)

(8):Special option:

REV.	ECN. NO.	APPD.



DESCRIPTION	Code	Specification	Plating
Center pin	1	Long Center pin end is even	Ni plating
	A		Au plating
	0	Long Center pin end is Circle	Ni plating
G	Au plating		
Center pin and Ground Terminal	T		Sn plating

(9):Packing mode:

1=Reel packing

3=Plastic box packing

4=Bag packing

**SPECIFICATION:**

1.Rating : DC 20V 4A;

2.Contact resistance: ≤30mΩ;

After test:≤50mΩ

3.Insulation resistance: ≥100MΩ (DC500V);

After test:≥50MΩ

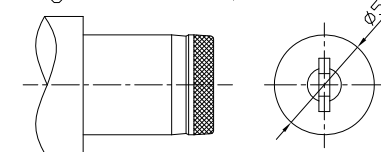
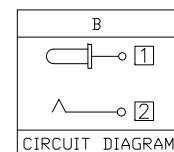
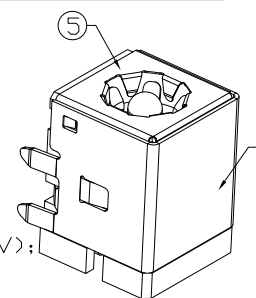
4.Withstand voltage: 500VAC;

5.Insertion and extraction force: 3-30N;

6.life test: 5,000 cycles;

7.Operation temperature range:-20°C~70°C;

8.Preservative temperature range:-40°C~85°C;



Model No.	G	H	J
CENTER PIN	φ1.65	φ2.0	φ2.5

DC MATE PLUG

○: ITEM NO. □: TERMINAL NO.

NO.	PARTS	MATERIAL	Q'TY	FINISHING	TOLERANCE	ANGLES	UNITS
6	Ground Terminal E	Copper Alloy	1	Tin/Ni plating			mm
5	Shield plate	Stainless steel	1		.X ±0.50	X ±5°	MAT'L
4	Terminal	Copper Alloy	1		.XX ±0.30	.X ±3°	SEE NOTE
3	Tip spring 2	Copper Alloy	1	See "Ordering info"	.XXX ±0.15	.XX ±2°	FINISH
2	Center pin 1	Zn Alloy	1	See "Ordering info"			SEE NOTE
1	Housing	High temp.Thermoplastic	1	Halogen Free, Black			Q'TY

THESE DRAWINGS AND SPECIFICATIONS ARE THE PROPERTY OF ACCURATE INNOTECH INC AND SHALL NOT BE REPRODUCED, COPIED OR USED IN ANY MANNER WITHOUT THE PRIOR WRITTEN CONSENT OF ACCURATE INNOTECH INC.

雅安科技有限公司 ACCURATE INNOTECH INC.			
TITLE: DIP DC POWER JACK		PART NO.: DCB0-01460	
DR: Ricky 2019/05/03		DWG NO.: AB0-01460	
CHKD: Ricky 2019/05/03		SCALE	SHEET
APPD:		1:1	1/1
		REV.	CUSTOMER DRAWING
		A	