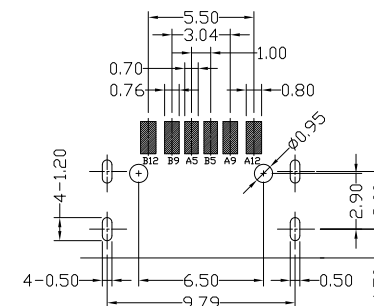
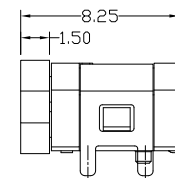
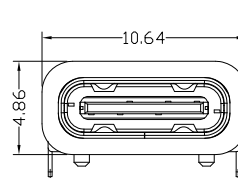
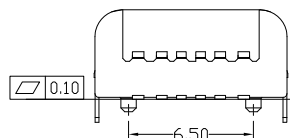
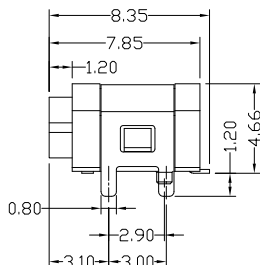
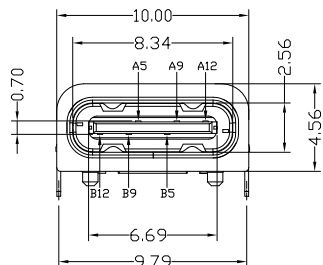
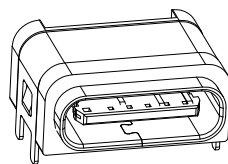
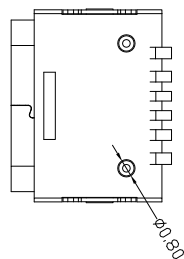




RoHS Compliant  
2002/95/EC

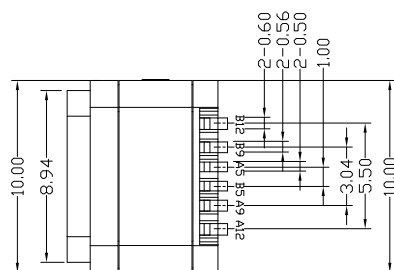


REV.	ECN. NO.	APPD.



加防水圈示意图

RECOMMENDED P.C.B. LAYOUT  
TOLERANCE UNSPECIFIED ±0.05mm



A5	CC1	B12	GND
A9	VBUS	B9	VBUS
A12	GND	B5	CC2
PIN	SIGNAL NAME	PIN	SIGNAL NAME

NOTES:

1.ELECTRICAL:

- 1)CURRENT RATING: 3A MAX.
- 2)INSULATION RESISTANCE: 100MΩ MIN;
- 3)CONTACT RESISTANCE: 40mΩ MAX;
- 4)WITHSTANDING VOLTAGE: 100V AC
- 5)OPERATING TEMPERATURE:-30°C TO +85°C.

2.Mechanical:

- 1)Mating Force: 5N~20N
- 2)Unmating Force: 8N~20N
- 3)Durability: 10,000 cycles

3.DIMENSIONS MARKED "▼"  
TO BE CHECKED BY Q.C & IPQC.

4.PART NO.

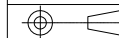
UWCF-06\*N-4BVS21

1Au 1U\*  
2Au 3U\*  
5Au 15u\*  
6Au 30U\*

W-WHITE  
B-BLACK  
1PB  
2PA6T  
3PA9T  
4LCP

6	WATERPROOF RING	硅橡胶	1	BLACK	x.x ±0.30	x.* ±2*	UNITS	mm
5	SHELL	STAINLESS STEEL	1	PLATED NICKEL	.xx ±0.20	.xx* ±1*	MAT'L	
4	SHIELDING PLATE	STAINLESS STEEL	1		.xxx ±0.10	.xxx* ±0.5*	SEE NOTE	
3	CONTACT	COPPER ALLOY	6	PLATED GOLD/TIN			FINISH	
2	SHELL HOUSING	LCP+30%GF	1	UL94V-0			SEE NOTE	
1	HOUSING	LCP+30%GF	1	UL94V-0			Q'TY	
NO	PARTS	MATERIAL	QTY	FINISHING				

THESE DRAWINGS AND SPECIFICATIONS ARE THE PROPERTY OF ACCURATE INNOTECH INC AND SHALL NOT BE REPRODUCED, COPIED OR USED IN ANY MANNER WITHOUT THE PRIOR WRITTEN CONSENT OF ACCURATE INNOTECH INC



雅安科技有限公司 ACCURATE INNOTECH INC.			
TITLE: USB Type-CF 单排6P 四脚插板 板上防水型		PART NO.: UWCF-06XN-4BVS21	
DR: Ricky 2019/08/19		DWG NO.: AII-VS21	
CHKD: Ricky 2019/08/19		SCALE	SHEET
APPD:		1:1	1/1
		REV.	CUSTOMER
		B	DRAWING