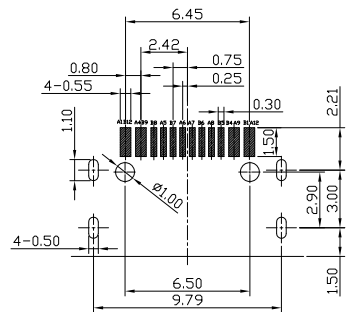
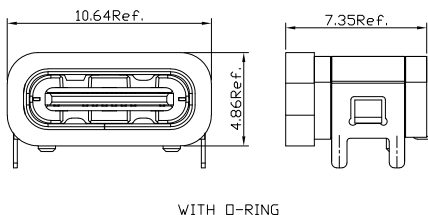
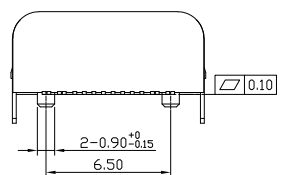
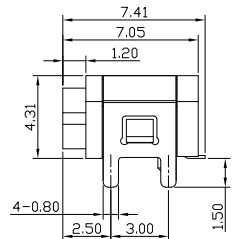
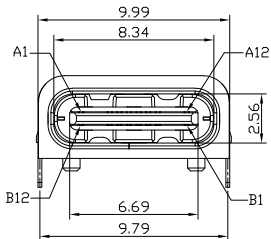
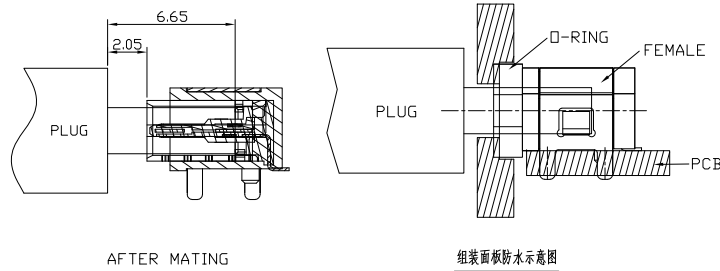
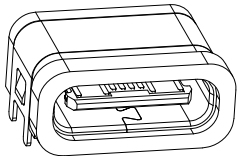
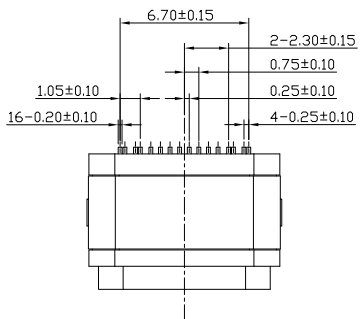




REV.	ECN. NO.	APPD.



RECOMMENDED P.C.B. LAYOUT
TOLERANCE UNSPECIFIED ±0.05mm

USB TYPE-C PIN ASSIGNMENTS

PIN	SIGNAL NAME	PIN	SIGNAL NAME
A1	GND	B12	GND
A4	VBUS	B9	VBUS
A5	CC1	B8	SBU2
A6	DP1	B7	DN2
A7	DN1	B6	DP2
A8	SBU1	B5	CC2
A9	VBUS	B4	VBUS
A12	GND	B1	GND

- NOTES:
- ELECTRICAL:
 - VOLTAGE CURRENT RATING: 5V 3A & 5A MAX
 - INSULATION RESISTANCE: 100MΩ MIN;
 - CONTACT RESISTANCE: VBUS & GND PINS AND OTHER PINS: 40mΩ/PIN MAX. SHIELD: 50mΩ/MAX. LLCR MAX. CHANGE OF ALL PINS: 10mΩ.
 - WITHSTANDING VOLTAGE: 100V AC FOR 1 MINUTE.
 - OPERATING TEMPERATURE: -30°C TO +85°C.
 - MECHANICAL:
 - MATING FORCE: 5N~20N
 - UNMATING FORCE: 8N~20N
 - DURABILITY: 10,000 CYCLES
 - DIMENSIONS MARKED "▼" TO BE CHECKED BY Q.C & IPQC.
4. PART NO. UWCF-161N-4BVS26
- 1#AU 1U' 1PBT
2#AU 3U' 2#PA6T
6#AU 30U' 3#PA9T
4LCP

NO	PARTS	MATERIAL	QTY	FINISHING	UNITS	mm
6	D-RING	SILICONE RUBBER	1	BLACK	X.X	±0.30
5	SHELL	STAINLESS STEEL	1	PLATED NICKEL	.XX	±0.20
4	SHIELD PLATE	STAINLESS STEEL	1	PLATED NICKEL	.XXX	±0.10
3	CONTACT	COPPER ALLOY	16	PLATED GOLD/NICKEL		
2	SHELL HOUSING	LCP+30%GF	1	UL94V-0		
1	HOUSING	LCP+30%GF	1	UL94V-0		

THESE DRAWINGS AND SPECIFICATIONS ARE THE PROPERTY OF ACCURATE INNOTECH INC AND SHALL NOT BE REPRODUCED, COPIED OR USED IN ANY MANNER WITHOUT THE PRIOR WRITTEN CONSENT OF ACCURATE INNOTECH INC

雅安科技有限公司
ACCURATE INNOTECH INC.

TITLE: USB TYPE C 单排16P 四脚插板上防水型

PART NO.: UWCF-161N-4BVS26

DR: Ricky 2023/12/04

DWG NO.: AII-VS26

CHKD: Ricky 2023/12/04

SCALE: 1:1 SHEET: 1/1 REV: B CUSTOMER DRAWING